




ATLAS

Crawler excavator | 215LC_{SR}

ROBUST. STRONG. STABLE.

215LC_{SR}



-  **48,061 lbs**
-  **157 HP**
-  **28.9 - 39.5 ft³**



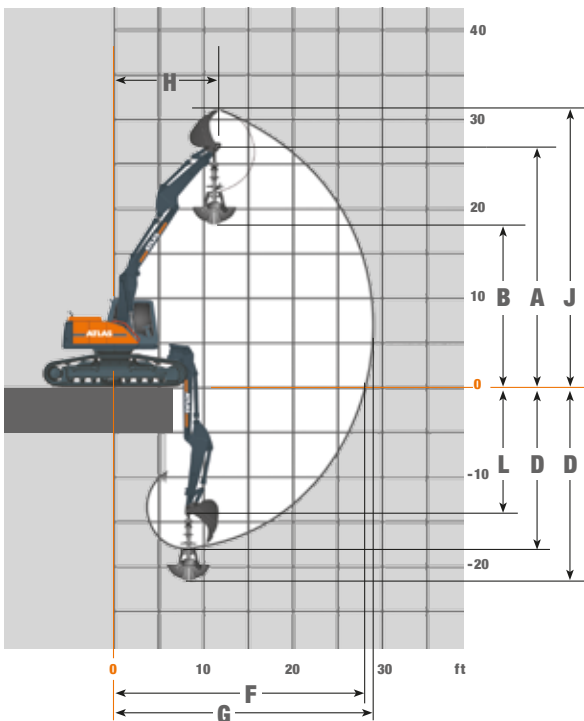
Technical specifications

ENGINE	HYDRAULIC SYSTEM	EQUIPMENT
Power rating acc. to ISO 9249 157 HP	• AWE 4 system	BASIC UNIT 67.82:
RPM 1800/min	• Load limit controlled high-performance pump	• Base arm C66.41
Make / model Deutz / TCD 4.1(Stage 3B)	• Fuel-efficient flow-on-demand control	• Adjustable boom C66.46, working length 11'
Design Turbocharger/Charge Air cooling	• Suction valves for all work functions	• Stick D63.3A, working length 8' 10"
Displacement 246 in ³	• Load-retaining a. fine lowering valves in lifting circuit	DRIVER'S CAB:
Number of cylinders 4	• Restrictors in the lift and articulating circuits	• Air-conditioning
Cooling system Water-cooled	• Primary and secondary overload protection	• Preparation for radio installation
Air filter Dry air filter	• Hydraulic system 1 x Axial piston pump	• Air-cushioned comfort seat (seat heating optional)
Battery 2 x 12 V / 100 Ah	• Main pump HPR 210	• Panorama glazing with heat-absorbing glass
Generator 24 V / 55 A	• Max. oil flow 99.8 gl/min	• Skylight window
Starter 24 V / 4 kW	• Max. operating pressure 4931 PSI	

TRACTION DRIVE	UNDERCARRIAGE	FILL CAPACITIES
• Max. speed 1.5 / 3.4 miles/h	• X-frame	• Fuel tank 68.68 gallons
• Tractive force 42,264 lbf	• Track 7' 3", Base plate width 2'	• Engine oil 3.43 gallons
• Max. gradeability 70%	• Drive quality B60	• Hydraulic tank 79.25 gallons

DRIVER'S CAB	SWING ASSEMBLY	ATTACHMENTS (SELECTION)
• Type Atlas comfort cabin 935	• Max. swing speed 9/min	• Bucket F416 / 29 f ³ / 3' 3" wide
• Total length 5' 9"	• Swing torque 33,190 lbf-ft	• Bucket F417 / 32 f ³ / 3' 7" wide
• Width 3' 1"	• Automatically controlled multi-disc brake	• Bucket F648 / 40 f ³ / 4' 3" wide
• ISO 6396 (L _p A) in driver's cab 78 dB(A)	• Axial piston motor with priority valve	
• 2000/14 EG (L _w A) ambience level ... 100 dB(A)		

Working ranges Hydraulic adjustable boom (C66.41)



	Bucket	Grabs
A Bucket pivot point	27' 7"	27' 7"
B Max. digging height	-	19' 4"
D Max. digging depth	19' 10"	23' 5"
F Max. reach	26' 3"	26' 3"
G Max. digging reach	30' 10"	28' 8"
H Max. arm position	12' 4"	12' 4"
J Max. reach height	32' 2"	-
L Lowest bucket pivot point	15' 3"	15' 3"
Max. bucket digging force	27,427 lbf	-
Max. stick digging force	18,210 lbf	-
Grab clamping force	-	16,411 lbf
Operating Weight	48,061 lbs	48,722 lbs
Tailswing radius	5' 9"	
Transport length	27' 1"	
Transport width	9' 10"	
Transport height	10' 6"	

Lifting capacities Hydraulic adjustable boom (C66.41) and stick 9' 10" (D63.3A). Swing radius 5' 9"

Height	9' 10"		13' 1"		16' 5"		19' 8"		23'	
	FRONT	LATERAL	FRONT	LATERAL	FRONT	LATERAL	FRONT	LATERAL	FRONT	LATERAL
+24'7"					9,859*	9,859*				
+19'8"					9,125*	9,125*	9,012*	7,590		
+14'9"			11,197*	11,197*	10,086*	9,830*	9,354*	7,586	8,920*	5,798
+9'10"	20,842*	19,839	14,791*	13,023	11,984*	9,570	10,379*	7,480	9,361*	5,798
+4'11"	23,250*	19,308	18,184*	12,714	13,904*	9,418	11,479*	7,474	9,927*	5,637
+ 0'0"	26,625*	19,400*	19,288*	12,747	14,850*	9,332	12,068*	7,105	10,168*	5,370
-4'11"	27,765*	18,710	19,531*	12,154	15,042*	8,874	12,350*	6,616	9,711	5,154
-9'10"	28,858*	18,415	20,357*	11,779	14,985*	8,386	10,124*	6,424		
-14'9"	19,716*	18,437								

All values in pounds (lbs) were determined acc. ISO 10567 and include a stability factor of 1.33 or 87% of the hydraulic lifting capacity. These values are applicable at the top of the arm with optimum positioning of the corresponding arm system and with power boost switched on. *Value limited due to hydraulics.

www.atlasgmbh.com

ATLAS Maschinen GmbH
EXCAVATORS
Atlasstrasse 6
27777 Ganderkesee, Germany
T: +49 (0) 4222 954 0
F: +49 (0) 4222 954 343
info@atlasgmbh.com